



Choksi Energy & Infrastructure Pvt. Ltd.

The Wind Farm Company

For further details please email us at info@choksienergy.com

ABOUT US

- Choksi Energy & Infrastructure Limited is an innovative energy & infrastructure company headquartered in Mumbai, India.
- Conceived in 2010 with just 20 people, Choksi Energy with an experience of over 35 years now strives to be a leading independent windfarm developer in India
- The company is currently active in various regions of India namely in states of Maharashtra, Gujarat, Rajasthan, Madhya Pradesh & Tamilnadu
- Choksi Energy's wind farm design ensures an optimal economic balance due to professional site selection and technical quality of the wind turbines.
- Choksi Energy's stringent implementation of its policy towards Environment, Health & Safety ensures optimal work environment

EHS & QUALITY POLICY

- Choksi Energy & Infrastructure Limited is a ISO 9001:2008 certified company
- Quality and Customer Satisfaction has been the back bone of the company and has been instrument in having repeat orders from customers
- Choksi Energy's stringent implementation of its policy towards Environment, Health & Safety ensures optimal work environment
- Have appointed independent consultant for implementation of EHS program
- Choksi Energy's serious intention of implementing the EHS program is reflected from the fact that there have been no major accidents at site till date
- All workers including subcontractors are educated and trained at intervals about the health and safety aspects of the projects.

ACTIVITIES

Land & Micrositing



Civil Foundation



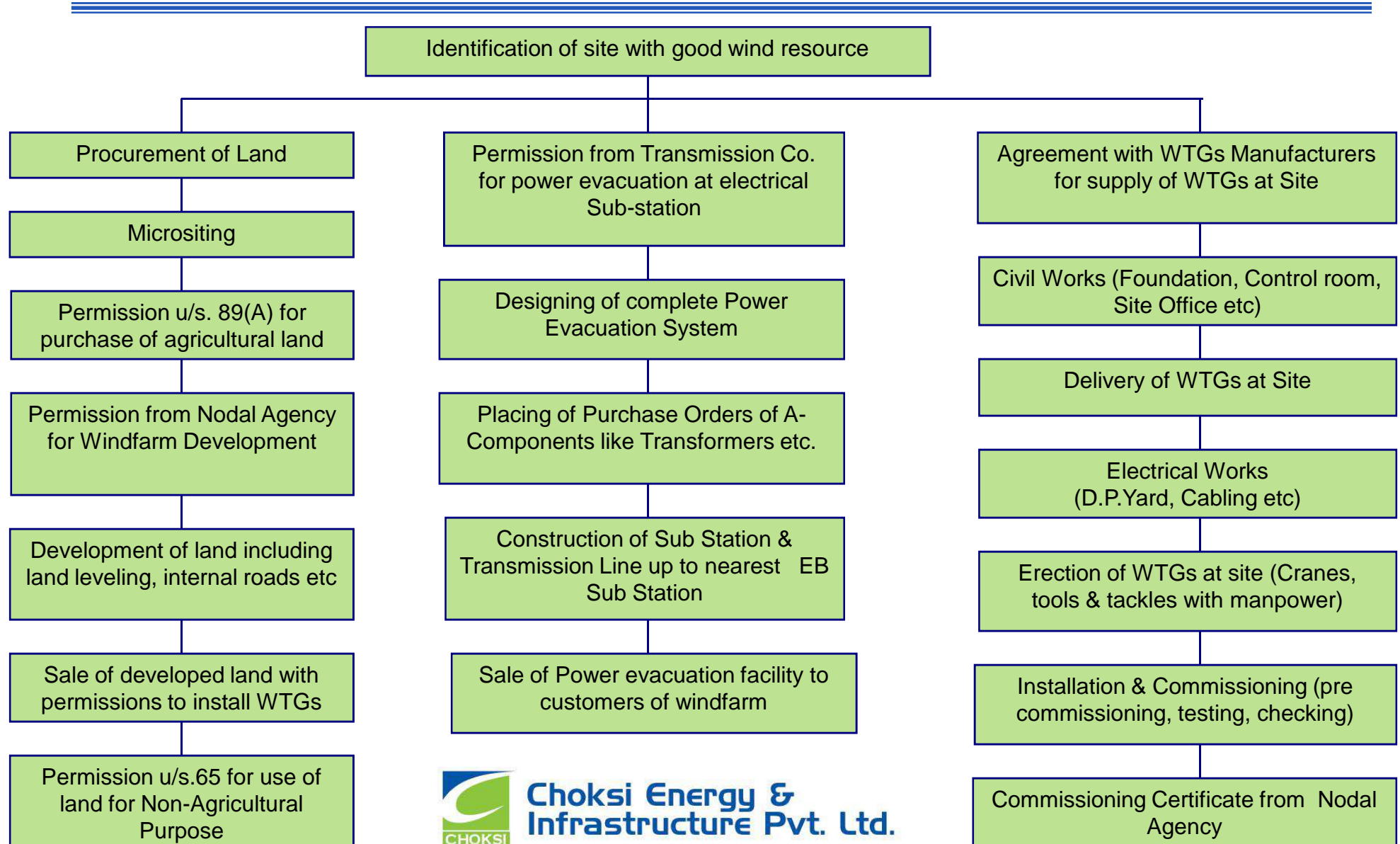
Electrical D.P.Yard / Transmission Lines



Erection & Commissioning



TURN KEY SOLUTION



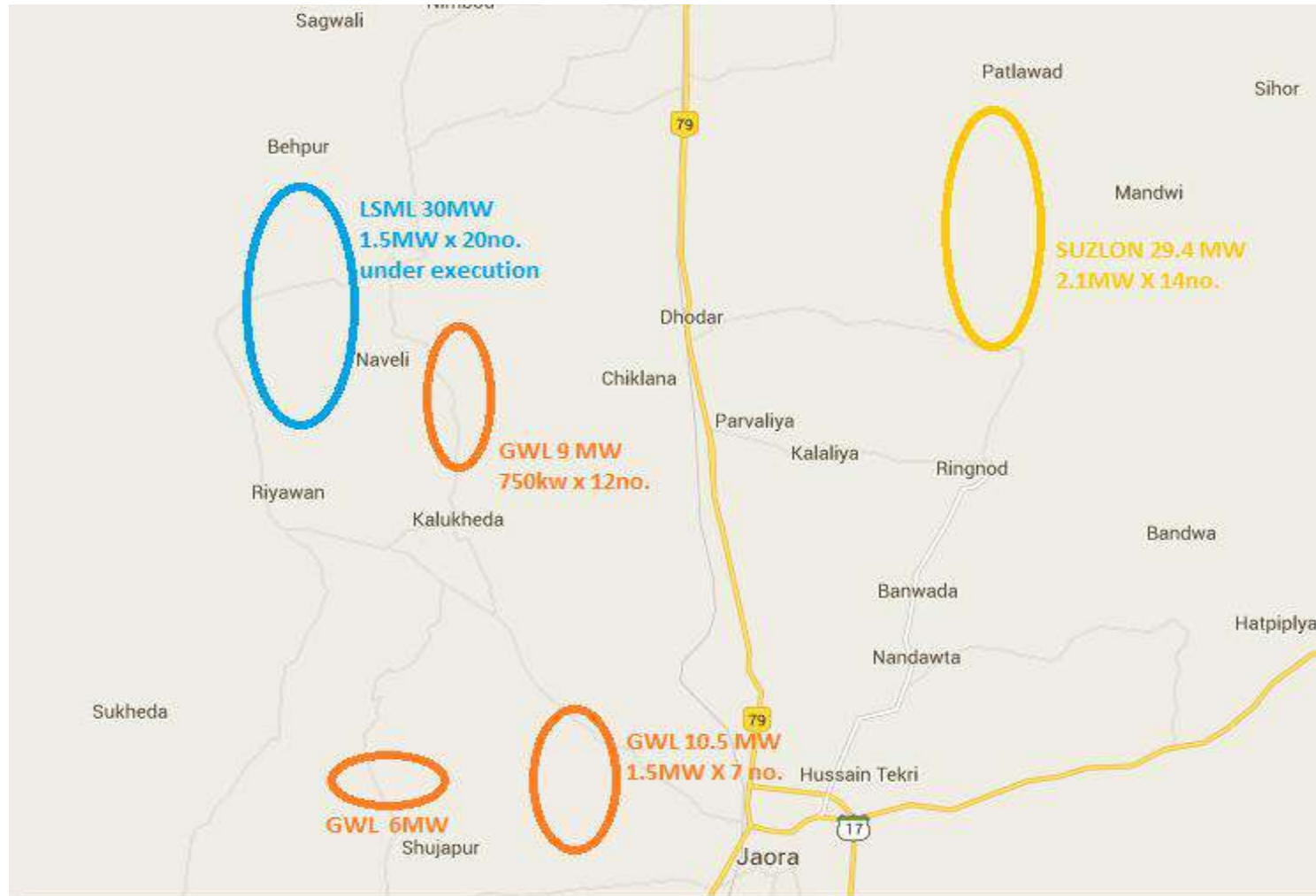
Choksi Energy & Infrastructure Pvt. Ltd.

TURN KEY SOLUTION

Activities	Agency
Permissions & Approvals	Choksi Energy
Land & ROW	Choksi Energy
Civil Foundation	
Materials	Choksi Energy
Supervision	Choksi Energy
Labor	Sub Contract
Soil Testing	Sub Contract
Electricals	
Materials	Choksi Energy
Supervision	Choksi Energy
Labor	Sub Contract
Erection	
Cranes	Sub Contract
Supervision	Choksi Energy
Labor	Sub Contract



PROJECTS EXECUTED



JETHANA WINDPARK – PROJECT INFO

Project Information

Windfarm Capacity: **6 MW**

Start of Construction: **Sept 2010**

Commissioning: **Dec 2010**

Operating Life: **20 years**

Grid Operator: **MPPKVV**

Nodal Agency: **MPUVNL**

Wind Turbines

Make: Global Windfarms Ltd

Model: GWP 47 750

Rated Power: 750 kw

Rotor Diameter: 47 m

Hub Height: 65 m



BAGIA NAVELI WINDPARK – PROJECT INFO

Project Information

Windfarm Capacity: **9 MW**

Start of Construction: **Mar 2012**

Commissioning: **Sep 2012**

Operating Life: **25 years**

Grid Operator: **MPPKVV**

Nodal Agency: **MPUVNL**

Wind Turbines

Make: Global Windfarms Ltd

Model: GWP 47 750

Rated Power: 750 kw

Rotor Diameter: 47 m

Hub Height: 65 m



MAWTA WIND PARK

Project Information

Windfarm Capacity: 30 MW

Start of Construction: Oct 2015

Commissioning Target: Dec 2016

Location : Mawta, Ratlam, MP

Grid Operator: MPPKVCL

Wind Turbines

Make: LSML

Model: LTW 86 -1.5

Rated Power: 1500 kw

Rotor Diameter: 86.3 m

Hub Height: 80 m



RINGNOD WIND PARK

Project Information

Windfarm Capacity: 29.4 MW

Start of Construction: Sep 2015

Commissioning Target: Mar 2016

Location : Ringnod, Ratlam, MP

Grid Operator: MPPKVCL

Wind Turbines

Make: Suzlon

Model: S-97

Rated Power: 2100 kw

Rotor Diameter: 97 m

Hub Height: 120 m



MAMATKHEDA WIND PARK

Project Information

Windfarm Capacity: 10.5 MW

Start of Construction: Sep 2015

Commissioning Target: Mar 2016

Location : Mamatkhedha, Ratlam

Grid Operator: MPPKVCL

Wind Turbines

Make: GWL (Minyang)

Model: MY 1.5

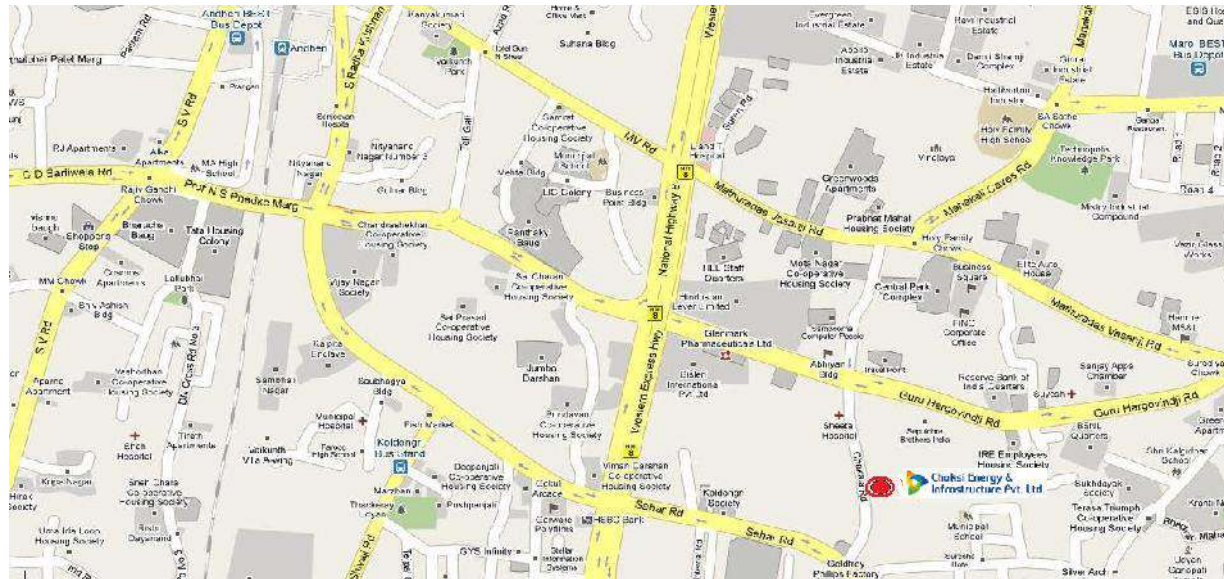
Rated Power: 1500 kw

Rotor Diameter: 89.3 m

Hub Height: 80 m



CONTACT US



Regd Office:

Choksi Energy & Infrastructure Ltd.

G-1 Bajson Industrial Estate

Cardinal Gracious Road

Chakala, Andheri (E)

Mumbai – 400099

Tel: +91-22-28236455

Fax: +91-22-28236404

Email: info@choksienergy.com

Web: www.choksienergy.com



**Choksi Energy &
Infrastructure Pvt. Ltd.**